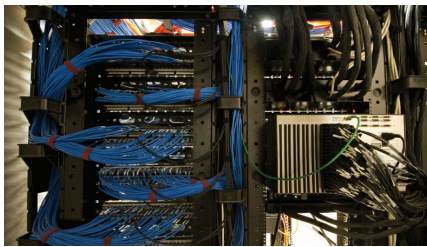


# STRUCTURED CABLING



## It All Starts with the Right Project Engineers

From start to finish,  
keeping you informed of  
the progress. The same  
level of excellence  
regardless of the size or  
scope of your project.



Integration of voice and data infrastructure - it's important - inside or outside the plant networks and pathways. Our years of experience and long-term manufacturer relationships have perfected the services and products we provide so we are able to solve the needs of our clients better than any other integrator.

Whether it is a simple Category 6 cable or the most extensive fiber project, OnePath has designed, installed and maintained it with a level of quality and professionalism that is unsurpassed in our industry. Our educational and engineering designations are proof of our commitment to excellence and we utilize this knowledge to better serve our clients. With OnePath, you receive the same level of excellence regardless of the size or scope of your project.

- Indoor copper and fiber cabling for voice, data, security, fire and audiovisual applications such as VOIP, gigabit ethernet, video distribution, and monitoring.
- Data Center construction of cabinets, racks, overhead support, connectivity and raised flooring
- Outside Plant installations of fiber and copper, both aerial and underground.
- Utility Construction of duct banks and pathways for communication and power distribution and long haul routing.

### From Start to Finish, OnePath is with you all the way

- Design engineers that work with your architects, consultants, facilities managers, IT staff or corporate management to create the perfect solution.
- Customization to meet your individual needs, from simple to sophisticated integration.
- Installation in every environment, including board rooms, classrooms, auditoriums, right of ways, underground ... anywhere.
- Continuing education for architects, contractors and other industry professionals.
- Maintenance and Inspection agreements for scheduled preventative service and/or extended warranties.
- Authorized service by factory trained and certified technicians, with a full line of parts in inventory.



ONEPATH SYSTEMS, LLC  
2053 Franklin Way  
Marietta, Georgia 30067  
TEL: 678 355 0555  
WEB: <http://onepathsystems.com>